

Beth-Elements

The Bulletin of Beth-El Congregation - A Reform Synagogue Serving Tarrant County

February 2024



Brian Zimmerman, Rabbi

Divrei Torah

..... Rabbi Brian Zimmerman

How do we navigate the terrifying moments of the last few months? How do we create safe places

without retreating to hiding places? What can we do as proud Jews, Americans, and citizens who love this country but fear the path that it is following in its current state of brokenness?

As your Rabbi, I find inspiration in your stories and your efforts at creating understanding, healing, and wholeness in our communities. Many of you inspire me with your own attitudes and actions.

One congregant, Miranda Nadel wrote this very special letter to the editor in the Texas Jewish Post. Both Rabbi Mecklenburger and I found it deeply inspirational. With her permission, it is my honor to present her as our D'var Torah teacher this month.

May all of us who are inspired by Miranda's words have the strength to bring our best to a broken world:

"Many years ago, I saw a film that interviewed the villagers in a small German town where Jews had lived for many generations.

"None survived the war, and the villagers were asked why they didn't attempt to help their Jewish neighbors. Their replies were unanimous. They lived together, but we never knew them. The children went to Jewish schools, they didn't play together, they never ate together, they went to Jewish doctors and didn't celebrate holidays together.

"Here I am in a senior community in Fort Worth. I am 88 years old. I belong to Beth-El and there are only four Jewish people living here. What can I do to combat hatred and anti-Semitism? The Christians who live here are nice people and I suspect I may be the first Jewish person they have met. This is what I am doing. On Friday nights, I invite two or three people to go to the Temple with me. Several are retired ministers and no one has refused my invitation. They just love being in Temple Beth-El. They love the music and the liturgy and most of all feeling so welcomed by the rabbis and the congregants.

"My hope is that should anti-Semitism become violent, they will not say they didn't know us. If you wonder what you can do personally, I hope you will consider this plan."

— Miranda Nadel

Worship Services

.....
All services in person and streamed at youtube.com/BethElCongregation.

Daily Minyan

Monday-Thursday 6 p.m.

Welcome Shabbat with wine, cheese, and friends at 5:30 p.m. Fridays, before the 6:15 p.m. services.

Friday, Feb. 2

Kabbalat Shabbat with Rabbi Zimmerman and John Sauvey 7:30 p.m.

Friday, Feb. 9

Kabbalat Shabbat and pre-K through first-grade Religious School Consecration service with Rabbi Zimmerman, Cantor Shoshana Abrams-Kaikov, and Scott Sloter 6:15 p.m.
Child care available

Friday, Feb. 16

Kabbalat Shabbat with Dr. Michael Ross, Hans Grimm, and the Beth-El Choir 6:15 p.m.

Friday, Feb. 23

Tot Shabbat 5:30 p.m.
Kabbalat Shabbat with Rabbi Zimmerman and Angie Friedman 6:15 p.m.

Friday, March 1

Kabbalat Shabbat with Rabbi Zimmerman and Student Cantor Samantha Chamberlin 7:30 p.m.

Saturday, March 2

Shabbat Morning Service of Song and Study at Rabbi Zimmerman's home with Student Cantor Samantha Chamberlin 10:30 a.m.

All are welcome but please RSVP to the Temple office for more information and directions.



Coming March 3, a WRJ/MRJ event: *A Morning with Brad Sham*

"The Voice of the Dallas Cowboys" See Page 11 for tickets and details



Robert Simon

President's Message

..... Temple President Robert Simon

Greetings and Happy New Year! We have just finished a great year at Beth-El

Congregation, and I look forward to continued success as we grow in numbers and in our connection with Jewish tradition. Last year, we were blessed with increased membership and Religious School enrollments as the Congregation recovers from the effects of the COVID-19 pandemic. And 2024 has gotten off to a great start, too.

On Jan. 28, we had a well-attended Community Mitzvah Day. The obligation of *Tikkun Olam* (repairing the world) is part of the prophetic tradition in the Hebrew Bible and lies at the heart of Reform Judaism.

We are also looking forward to our Purim celebrations the weekend of March 22 at Beth-El Congregation. Join us Friday night for some fun songs and skits following our Shabbat service and all are invited for the Religious School Purim Celebration on Sunday morning, March 24. Purim is the one holiday in our Jewish tradition that is meant to be silly rather than solemn, so in that tradition, the *Shpiel* will be light-hearted, and a little off-color. Come enjoy the show, and bring your sense of humor.

Beth-El continues to develop programming for youth and young families. Building on the success of Beth-El Junior Youth group (BEJY), the Youth Committee and several young families have decided to create programming for two new groups for younger kids. The Maccabees, named after the heroes of Chanukah, is for second- through

fourth-graders and chaired by Nikki Slobodin. The Junior Maccabees, chaired by Lian Horenblas and Brittany Walker, is for toddlers to first graders and their first event was Saturday, Jan. 27. We look forward to more fun and engaging activities for kids in all three youth groups. We strive to build community for Jews of all ages, from toddlers to 120. Come join us. Judaism is a team sport.

The world outside our walls remains challenging. We pray for the State of Israel, its brave military members, and for the safe return of the remaining hostages as the war against Hamas continues.

The threat environment here has been stable, but nonetheless elevated from where it was before October 7. Beth-El Congregation continues to monitor the security situation and coordinate with the Fort Worth Police, the Tarrant County Constable, the Jewish Federation, and the other Jewish congregations in Tarrant County. As of this writing, we are unaware of any direct threat to our Congregation or the local Jewish community. Nonetheless, Beth-El will maintain all security protocols currently in place, including keeping only one entrance open, secured by a maglock, police protection for all congregational events, and the enforcement of the bag and backpack policy. Please leave any large bags and backpacks in your cars.

I am excited about our upcoming spring events and the positive direction of the Congregation. We look forward to seeing you in the coming months, at the 6 p.m. daily minyan, our weekly Shabbat services, Purim, and many more learning and social opportunities. L'Shalom.



Cindy and Robert Simon

Schmoozing with the Simons

Sundays, Feb. 4 and Feb. 19, 9:15 a.m. in the Gathering Area.

Beth-El President Robert Simon and his wife, Cindy, will welcome parents of Religious School students — and any other congregants — with coffee, bagels, and conversation.

Beth-El Film Series



Armageddon Time

Rated R
1h 55m

Saturday, Feb. 10

6 p.m. Free

Enjoy a special New York City dinner — with knishes, egg creams, and more — plus a movie with the next installment of Beth-El's Film Series on Saturday, Feb. 10.

Armageddon Time is a deeply personal coming-of-age story from writer-director James Gray that reflects his own family's generational pursuit of the American Dream.

The film features an all-star cast, including Anne Hathaway and Jeremy Strong as Jewish parents trying to find their way, and Anthony Hopkins as the grandfather, a Holocaust survivor who teaches his grandson to be a mensch above all else but also has his own private code to survival.

Request a visit

..... www.bethelfw.org/community

Do you know someone at home or in the hospital who could use a visit from the Rabbi or another Temple member? Do you have the name of an ill family member or friend that you would like to be read at our Shabbat service? You can go directly to our MiShebeirach/Prayer and visit the request link on Shulcloud at www.bethelfw.org/community or call the Temple office.

Rabbi Zimmerman, Amy Robbins, and Pattie Wood will get the information from this site quickly. We can't visit or offer assistance if we don't know!

Thanks in advance for your help.



Shoshana Abrams Kaikov

Consecration 5784

.....Education Director, Cantor Shoshana Abrams Kaikov

It's hard to believe February 2024 has already arrived. We're having a fantastic school year so far.

As Beth-El's Director of Education, I feel so blessed to be able to help guide our Religious School families on their Jewish journeys. Each year, the school calendar is filled with so many powerful moments — B'nai Mitzvahs, Confirmation, Tot Shabbats, Community Shabbat Services, Mitzvah Days, and more. One of my favorite ceremonies each school year is Consecration.

What is Consecration? This is a special ceremony for our younger students and their families to mark an especially beautiful *shehecheyanu* moment. That is, we celebrate their official start to formal Jewish learning. We essentially acknowledge that these kids are no longer babies. They are big kids who get to study all kinds of amazing things like Torah, Hebrew, Jewish holidays, Jewish history, etc. And, it is our ultimate goal to make Jewish learning

sweet for all of our children.

This year, we will have our Kindergarten and First-Grade Consecration Service and Ceremony on Friday, Feb. 9 at 6:15 p.m. during our Shabbat evening services. Kindergarteners and first-graders will help lead some Shabbat songs and prayers, they will be presented with certificates and special gifts, and we will celebrate this special Jewish milestone together. We encourage the entire community to join us for services and to celebrate these precious children — the future of our congregation. Everyone is invited to join us for a celebratory oneg after services.

Kindergarten and first-grade families, please be sure to RSVP to the email you received and plan to arrive by 5 p.m. for our Consecration class photo. A special thank you to our teachers, *madrichim*, and community members who are helping to ensure that this is a very special experience for our families. Mazel tov to our 5784 Consecrants!



Summer Camp 2024

Last call for summer camp scholarship

Cantor Shoshana and Rabbi Brian will be at Greene Family Camp for second session this summer. Spaces are still open to apply but time is running out. Jewish camp is an amazing and empowering experience. If you are going to any Jewish camp and need financial assistance, the deadline has already passed BUT **applications will be accepted until Feb. 5 at the absolute latest!**

Executive Director

.....Amy Robbins

Many of you know Pattie Wood, the Temple office executive assistant. She just completed one year at Beth-El Congregation. Pattie is the voice on the other end of the phone when you call the office. She is the first smiling face you see when you visit the Temple, and provides professional support to me, the Rabbis, the Board, her office colleagues, and anyone who needs assistance.



Pattie Wood

Pattie has a passion for social justice and brings that commitment and enthusiasm to work every day. She encourages us to fully embrace the collective responsibility we have for solving human problems. It brings me joy to reflect on the contributions she has made this last year. Please join me in thanking Pattie for her dedication to Beth-El Congregation.

Youth News

In early January, BEJY took a trip to the movies to see "Wonka," and a great time was had by all. Marina Rekhelis made a delicious cake for Nethanel's 10th birthday, and we also sang "Happy Birthday" to Jacob Strausz! Happy birthday to both BEJYites!!

At right, Nethanel Rekhelis and Jacob Strausz celebrated their January birthdays with BEJY.



Get weekly e-blasts from Rabbi
by e-mailing:
rabbiz@bethelfw.org



Michelle Hartman

Women of Reform Judaism

.....WRJ President Michelle Hartman

Hello, Sisters. I would first like to thank so many of you who made

our Annual Brunch a HUGE SUCCESS! We were able to raise more money than we ever have in the past, which will allow us to increase the amount we give to Religious School in the coming year.

Coming up in February we have **Rosh Chodesh on Saturday, Feb. 10** — time and location to be determined. We'll also have a **Galentine's Day High Tea,**

Saturday, Feb. 17, 1:30 p.m., at The Rose Garden Tea Room, 7200 Camp Bowie Blvd. This event is \$25 for non-members and \$15 for members.



Join WRJ

Then we will have our annual **Hamentaschen Bake-In, Feb. 25**, when we will make enough of the delicious cookies for several ones, plus the Temple and Religious School Purim celebration. No experience? No problem! We have a wonderful system all worked out and will teach you everything you need to know. We will send out invitations for all events with a sign up link.

Pictures from WRJ & MRJ events ...



The WRJ 2024 Brunch Committee



Religious School students performing Chanukah songs at the WRJ Brunch.



Eric Deutsch

Men of Reform Judaism

.....MRJ President Eric Deutsch

MRJ had a busy January as we hosted the annual Jewish War Veterans meeting Jan. 7 and

led the MRJ Shabbat service and dinner on Jan. 26.

Our next big event, which we are co-hosting with the WRJ, is coming up on Sunday, March 3. "A Morning with Brad Sham, The Voice of the Dallas Cowboys" is a must-see event. Please see page 11 for details. Register for the event at bethelfw.org.

Also, on Sunday, April 7, we will honor the **Mickey Goldman Person of the Year**, MRJ member and volunteer extraordinaire **Jim Stein**, with the traditional spaghetti dinner and award ceremony. We will also celebrate the winner(s) of the MRJ collegiate scholarship. Scholarship applications are being accepted through Feb. 16.

If you would like to join the MRJ or just learn more about our group, please contact me at eric.deutsch@haynesboone.com or 972-800-3578.



MRJ members making latkes for Chanukah.

Who are the Welcomers?

.....Edythe Cohen

The Welcomers are the people you meet wearing red name badges at services and special events. We are volunteers who greet everyone, wish all Good Shabbos, and thank our guests for joining us. If you are visiting, we will ask you to wear a name tag and help you meet others. Sometimes, you'll see the Welcomers working special events

to help our guests find the Great Hall or other activities.

While you won't see the same person each Friday, we are all dedicated to working and serving on a rotational basis — about once a month.

If you'd like to become a Beth-El Congregation Welcomer, please contact Edythe Cohen, ecohentx@att.net.



A big crowd at Chanukah Shabbat dinner.

Contributions

Archive Fund

In Memory of Rosanne Margolis
· Dana and Jacob Rosenstein
In Memory Dr. Donald Cohen
Judith Cohen
In Memory Dr. Sidney Cohen
Judith Cohen

Bake Sale for Israel

· Katie Sherrod
· DeEtte Vasques
· Woodrin Grossman
· Katie Schma
· Susan and Russ Schultz
· Alexandra Tung
· Janice Danford

Caring Congregation Committee

In Memory of Annette Dover
· Joan and Howard Katz
In Memory of Mollie Kessel
· Joan and Howard Katz
In Honor of Carol Minker
· Kelly Pumphrey

Floral Fund

In Memory of William Westermann
· Yuyo Westermann
In Memory of Dorothy Solomon
· Jenny Solomon
In Memory of Evan Westermann
· Yuyo Westermann
In Memory of A.J. "Bob" Kboudi
· Marilyn and Van Stenzler
In Honor of Anne Westermann
· Yuyo Westermann

Library Fund

In Memory of Leonard Hochster
· Dick and Judie W. Greenman

Mitch Stenzler Scholarsip Fund

In Memory of Roseanne Margolis
· Marilyn and Van Stenzler
In Memory of Leonard Hochster
· Marilyn and Van Stenzler

Music Fund

· Larry and Joan Brotman

Operating Endowment

In Memory of Leonard Hochster
· Joan and Howard Katz

Rabbi Mecklenburger's Discretionary Fund

In Memory of Fanchon Florsheim
· Alan Ettinger
In Memory of Sandra Freed
· Rose-Marie and Len Schweitzer

Rabbi Zimmerman's Discretionary Fund

In Memory of Rosanne Margolis
· Rose-Marie and Len Schweitzer
In Memory of Sheldon Anisman
· Rose-Marie and Len Schweitzer
In Memory of Louis Henry Altman
· Louis and Leigh Schultz
In Memory of William Westermann
· Yuyo Westermann
In Memory of Pauline Schweitzer
· Rose-Marie and Len Schweitzer
In Memory of of Rob Sandler's parents
· Marjorie and Eric Deutsch
In Memory of Morris Miller
· Felice and Lee Anspacher
In Honor of Brigitte Altman
· Rose-Marie and Len Schweitzer
In Honor of Carole Rogers
· Rose-Marie and Len Schweitzer
In Honor of Doug Roper's 80th
Birthday
· Rose-Marie and Len Schweitzer
In Honor of Richard Minker's 80th
Birthday
· Rose-Marie and Len Schweitzer
In Honor of Rosalyn Rosenthal's 99th
Birthday
· Rose-Marie and Len Schweitzer
In Honor of our grandkids: Michael,
Ari, Hannah, Jordan and Parker
· Debra Ann and Les Rosenthal

Religious School Fund

In Memory of Phyllis Ettinger
· Alan Ettinger
In Honor of Madolin Rosenthal's
conversion
· Carole Rogers

Rosenthal Siegel Fund

In Memory of Fanchon Florsheim
· Rosalyn Rosenthal

Temple Fund

In Memory of Barbara Korman
· Carole Rogers
In Memory of Fortune Babani
· Vicky and Al Abrams
In Memory of Fanchon Florsheim
· Robert and Judie B Greenman
In Memory of Fanchon Florsheim
· Cynthia Gilbert
In Memory of Fanchon Florsheim
· Ruth and Doug Roper
In Memory of Dr Richard Hochberger
· Marilyn and Larry McGee
In Memory of Jack Orlow
· Marilyn and Larry McGee
In Memory of Esther Leventhal
· Harry Leventhal and
Judy Massis-Leventhal
In Memory of Fanchon Florsheim
· Lon and Laurie Werner
In Memory of Barbara Korman
· Carole Rogers
In Memory of Fanchon Florsheim
· Pearl Katz
In Memory of Leonard Hochster
· Carol and Richard Minker
In Memory of Albert Kelfer
· Laurie and Howard Kelfer
In Memory of Joseph Sarfatti
· Laurie and Howard Kelfer
In Memory of Faye Sarfatti
· Laurie and Howard Kelfer
In Memory of Linda Abramson
· Carol and Richard Minker

Temple Fund (contiued)

In Memory of Gordon Cizon
· Deidra Bihari Cizon
In Memory of Mildred Miller
· Felice and Lee Anspacher
In Memory of Florence Sherman
· Selma Sherman
In Memory of Erma Sloin
· Billy and Rozanne Rosenthal
In Memory of Stephen Richard Walters
· Billy and Rozanne Rosenthal
In Memory of Sam Menscher
· Harriette and Arnold Gachman
In Memory of Lillian Klotzman
· Harriette and Arnold Gachman
In Honor of Barbi Eisenman's birthday.
· Robert and Judie B Greenman

Tree Fund

In Memory of Michelle Palla
· Ellie Cooper
In Memory of Michelle Palla
· Corrine Bloom
In Memory of Eric Schwartz
· Ellie Cooper

Youth Fund

In Memory of Helen Janet Factor
· Mindy and Rick Cohen



Primitimers celebrated Edythe Cohen's 96th birthday in January.

Primitimers

..... Michelle Hartman

Shalom, Primitimers. WOW, what a turn out we had for January!

Everyone enjoyed doing chair yoga and celebrating Edythe Cohen's 96th birthday. Thank you all for helping make this special lady feel so loved.

On **Thursday, Feb. 15**, we will be doing some **Pour Painting**. No talent? No worries. This is easy and fun, and if you're not careful, you could become addicted. The class will be led by our own Gloria Sepp. All materials will be included and you'll get to take home a piece of art that you made.

Lunch will be at noon and catered by Einstein Bros. Bagels, or you can bring your own. For \$10 you get potato chips and your choice of:

- Roasted turkey on a plain bagel with spinach, cucumber, lettuce, and tomato (onion chive cream cheese on the side)
- Nova lox on a plain bagel with onions, capers, tomato, and plain cream cheese
- Veggies on a sesame bagel with avocado, tomato, lettuce, spinach, cucumber, red onion, and garden veggie cream cheese

Be sure to save room for some yummy desserts! Please RSVP, even if you're not ordering lunch so we have enough supplies, by Sunday, Feb. 4, to Michelle Hartman at hartman8729@sbcglobal.net or 817-706-3451.

Then and Now: A Loving Tribute

..... Hollace Ava Weiner, Temple Archivist



Hollace Weiner

When Sydney Alten Rashti, a vibrant woman active in the Temple Sisterhood and Ha-dassah, died at age 65 on Aug. 27, 1976, from a

heart ailment, her crestfallen husband wanted to create a fitting memorial to the mother of his twin daughters and the light of his life.

The chapel at Beth-El's Broadway Avenue synagogue was being remodeled into a contemporary worship space with bronze-colored glass doors at the ark and orange upholstered seats. The architect, John Mike Cohen, designed paneled walls with slanted, cedar-stained planks that created an artistic chevron design throughout the room.

He also sketched plans for an abstract menorah with vertical arms stretching to 6 ½ feet. The bereaved widower, George Rashti, a real estate developer born in Baghdad, commissioned the \$2,200 bronze menorah "in memory of my beloved wife."

When the 320-pound Judaica sculpture arrived from a foundry in St. Louis, it was damaged. Several parallel branches were bent, so it was shipped back and the angular arms were realigned. The menorah returned to the bimah at Beth-El just in time for Sydney Rashti's *yahrzeit* — the one-year anniversary of her death.

George was pleased. When he died in 1990 at age 82, Rabbi Emeritus Bob Schur remarked how appropriate it was that George's service was in the same chapel where the menorah in mem-



The angular, abstract menorah designed in 1977 in memory of Sydney Rashti has a misspelling of her name on its bronze inscription.

ory of his wife stood. When Beth-El Congregation moved into its current location, designers placed the striking bronze menorah, which resembles a pitchfork, against a limestone wall near the Temple's front entrance.

For years, no one noticed Mrs. Rashti's first name, inscribed twice at the base of the bronze, was misspelled as "Sidney." She was Sydney with a "y." The Sisterhood yearbook listed her as "Syd" for short. Recently, I spotted the discrepancies when completing an archives index documenting the "Buildings of Beth-El."

Next time you enter the Temple, take a look!

Sydney and George Rashti's names are spelled correctly at Greenwood Cemetery, where the couple's gravestone states: "Together Forever."

The Gift Shop is Open!

The WRJ Gift Shop at Beth-El is the easiest way to support Beth-El's Religious School.

Gift Shop Hours:

Sundays, 9:15 a.m. to 12:30 p.m.

Wednesdays, 11 a.m. to 2 p.m.

February - 2024 - 5784

| Sunday | Monday | Tuesday | Wednesday | Thursday | Friday | Saturday |
|---|---|---|--|--|--|--|
| | | | | 1 6 pm Evening Minyan | 2 7:30pm Shabbat | 3 9 am Zoom Torah Study |
| <p>Get weekly e-blasts from Rabbi by e-mailing: rabbiz@bethelfw.org</p> | | | | | | |
| 4 9:15 am-12:30 pm Gift shop open 9:30 am Religious School | 5 6 pm Evening Minyan | 6 12 pm Jewish Puzzle of Life 6 pm Evening Minyan 7:30 pm Curious About Conversion | 7 9:30 am Archives meeting 11 am-2 pm Gift shop open 6 pm Evening Minyan | 8 6 pm Evening Minyan | 9 Consecration 5:30 pm Shabbat welcome 6:15 pm Kabbalat Shabbat | 10 9 am Zoom Torah Study WRJ Rosh Chodesh 6 pm Film Series: "Armageddon Time" |
| 11 9:15 am-12:30 pm Gift shop open 9:30 am Religious School 9:30 am A God We Can Believe In 10:30 am MRJ Meeting | 12 6 pm Evening Minyan 7 pm Board Meeting | 13 6 pm Evening Minyan | 14 9:30 am Archives meeting 11 am-2 pm Gift shop open 6 pm Evening Minyan | 15 12 pm Primetimers 6 pm Evening Minyan | 16 FWFTY NYC Trip 5:30 pm Shabbat welcome 6:15 pm Kabbalat Shabbat | 17 FWFTY NYC Trip 9 am Zoom Torah Study 1:30 pm WRJ Galentines High Tea The Rose Garden Tea Room |
| 18 FWFTY NYC Trip 9:15 am-12:30 pm Gift shop open 9:30 am Religious School | 19 FWFTY NYC Trip 6 pm Evening Minyan | 20 12 pm Jewish Puzzle of Life 6 pm Evening Minyan | 21 9:30 am Archives meeting 11 am-2 pm Gift shop open 6 pm Evening Minyan | 22 6 pm Evening Minyan | 23 5:30 pm Tot Shabbat 5:30 pm Shabbat welcome 6:15 pm Kabbalat Shabbat | 24 9 am Zoom Torah Study 7 pm WRJ Book Club |
| 25 9:15 am-12:30 pm Gift shop open 9:30 am Religious School 9:30 am WRJ Hammentaschen Bake-in 9:30 am A God We Can Believe In 7 pm Federation Kick-Off | 26 6 pm Evening Minyan | 27 6 pm Evening Minyan | 28 9:30 am Archives meeting 11 am-2 pm Gift shop open 6 pm Evening Minyan | 29 6 pm Evening Minyan | 1 7:30 pm Shabbat service | 2 9 am Zoom Torah Study |

For additional information and updates about events, please visit our website at www.bethelfw.org or see Rabbi's e-blasts.

**Jewish Federation of Fort Worth & Tarrant County
2024 Annual Campaign Kick-Off Event**

Sun 
**SATURDAY
NIGHT
LIVE**



FEATURING

Four Day Weekend
fourdayweekend.com

**Sunday, Feb. 25,
2024**

6:30 p.m.

**Four Day Weekend
Comedy Club**

**312 Houston Street
Fort Worth
RSVP By Monday,
Feb. 19**

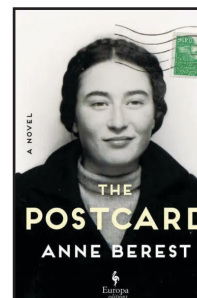
\$50/person

· Casual Attire ·
Savories and Sweets from
Local Foods Kitchen
· Open Bar ·
Free Street
and Nearby Garage Parking
Limited Seating

For tickets, contact Cindy Simon at 817-569-0892; c.simon@tarrantfederation.org

Library Reviews

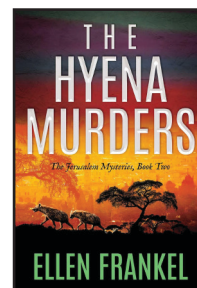
.....Margie Zentner



The Postcard By Anne Berest

is a vivid portrait of the 20th century Parisian intellectual and artistic life, an enthralling investigation into family secrets, and a poignant tale of a Jewish family devastated

by the Holocaust and partly restored through the power of storytelling. In 2003, an anonymous postcard arrives at the Berest family home. On the front is a photo of the Paris Opera house. On the back are the names of Anne Berest's great-grandparents and their children, all of whom were killed in Auschwitz. Fifteen years after the postcard is delivered, Anne sets out to discover the fate of the family and, in doing so, she learns more about herself.



The Hyena Murders by Ellen Frankel

tells the story of a murder plot seeded in the mountains of Ethiopia that, years later, brings trouble to modern Jerusalem as a serial killer targets a

prominent Beta Israel family. Confronting racial politics, police corruption, and human trafficking, Israeli intelligence agent Maya Rimon tries to stop the killer before his double-edged blade finishes off the entire family.

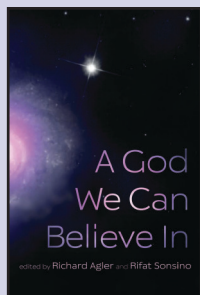


How to Love Your Daughter by Hila Blum

is a mesmerizing story of a woman's quest to understand how her relationship with her daughter, which began so blissfully, has arrived at a point of such an

unfathomable distance. Going back and forth through time, Yoella unravels memories and long buried feelings in search of the daughter she has not seen in years and the granddaughters she's never met.

A God We Can Believe In *Rethinking Reform Jewish Belief and Practice*



Feb. 11, 25
9:30-10:40 a.m.

This book offers 28 essays of faith, worship, holidays, and lifecycle events challenge contemporary Jews to rethink beliefs and practices. Members of the congregation will prepare and present short essays from the book and invite others to reflect and react to the ideas. The goal is not to take votes, but to deepen our perspectives as Jews. Rabbi Mecklen-

burger and/or Rabbi Zimmerman will be present at each class as needed to assist in this mostly lay-led conversation. The book is available online or through the Temple office.

Finding Our Place in the Jewish Puzzle of Life:

A Search for Personal Theology with Rabbi Zimmerman

Tuesdays at noon, Feb. 6 and 20

Have you ever been asked why you are Jewish and found yourself groping for an answer? Has your son or daughter asked you why he or she has to have a bar or bat mitzvah and you knew it mattered but found yourself speechless? This twice monthly class led by Rabbi Zimmerman will study philosophers, occasionally bring in guest speakers, explore Jewish history and text, all with the goal of articulating a personal theology. If this appeals to you, please consider joining us.

Caring Congregation Committee

..... Carol Minker, Chair



At any moment in time, members of our Congregation may be in need — not of charity — but in need of *acts of loving kindness!* In order for the committee to do our best, we need to know who is ill, needs a welcome or virtual visit, or a meal. Please contact the Temple office, and a member of our committee will be in touch.

Yahrzeits

February 2

Robert Abrams
Cecile Azerad
John Barrett
Fannie B. Bloom
Ed Bond
Ann Saeks Capper
Charles Christie
Gordon Cizon
Stanley Cott
Sol Englander
Peggy Farb
Jack A. Frankrich
Phil Freedman
Leah Fuchs
Arthur Ginsburg
Dore Goldstein
Dorothy Goodside
Harry Gressman
Otha Grisham
A. M. Herman
Don Herman
Jacqueline Hirsh
Dr. Richard Jolkovsky
Richard Kanterman
Isidore B. Katzenstein
A.J. "Bob" Kboudi
Sheldon Labovitz
Daisy Landman
Hattie Lederman
Isadore Joseph Levitan
Frieda K. Miller
Ivan Miller
Rose Pell
Blanche Friedmann Propper
Morty Rapfogel
Clementine Haas Samson
Joseph Sarfatti
Rabbi Robert J. Schur
Murray Schweitzer
Florence Sherman
Scott Slatkin
Harriet Stein
Margaret K. Steinberger
Anna Van Giesen
Stephen Richard Walters

Marion Weil
Morris Weinberg
Sidney E. Weltman

February 9

Madaline Broude
Martin Brown
Benjamin Coopersmith
David Cott
Edward Deems
Barbara "Bobbie" Freid
Max Gilbert
Ray Marks Gilbert
Maria Gluck
Bennie Goldstein
Michael Goldstick
Gary Klapper
Aaron Kuperman
Leo S. Lederman
Peggy Lerner
Harold David Levy
Jimmy Owen
Marian Doris Pruitt
Lura B. Reynolds
Ruth Ross
Ike Sandler
Faye Sarfatti
Maxine White Schur
Scott Sherman
Melissa Sherman
Allan Sigman
Lucille Walderman
Howard Wolner

February 16

Jimmie Allen
Helen Ginsburg Archenhold
Max Birenbaum
Ellen Silver Bowsher
Mary Chanosky
Frieda Cristol
Mark D. Feinknopf
Selma Friedman
Dr. Daniel Gestring
Danny Glazer
Jack Greenman
David Gross, Jr.

M. Herbert Herzfeld
Lauren Hoffman
Helen Kanzer
Max Kaplan
Winfield Klar
Jerome Levy
Dolly Lipshitz
Harriet Lurie
Albert Maier
Charlotte Ray Mann
Israel Margolis
Eli Nadel
Helene Sonia Nelson Dollinger
Jack Newlander
Morton Plotsky
Sherman S. Resnick
Rose H. Rosen
Barbara Rosenthal
Harry Rubin
Henry Schlinger
Rae Schneeweiss
Earnest C. Stanley
Barry Taurog
Emily Wile
Alex Wolf

February 23

Corinne Stein Baum
Lillian Bellows
Walter John Bressert, Jr.
Ruth Brody
Paul J. Cohen
Harold Freed
Leo Leopold Gernsbacher
Burton Gilbert
Ida Goldgraber
David Greenberg
Robert Greenberg
Audrey Weisser Hartwell
Erwin P. Hoffman
Max L. Honigfeld
Tillie Jacobson
Mary Jolkovsky
Fred Kemp
Milton Krochmal
Albert Kulakoff

Judith A. Mabry
Irving Mandelbaum
Dorothy Nass
William Pratt
Abe M. Rosenstein
Edward Schultz
Rosalie Schwartz
Sarah Levy Shanblum
Tikva Sheena
Rae Shiffman
Richard U. Simon, Sr.
Lillian Sperling
Edith Schwarz Strauss
Thomas Taylor
Allen Tilkin
Aaron B. Wolfson

March 1

Virginia Abrams
Nelson Alter
Claire Benno
Stena Bloomberg
Dr. Howard A. Britton
Samuel Bzostek
Marie Meisel Cedars
Joseph Feuer
Barney Finkel
Birdie Gordon Freedman
Gertrude Gernsbacher
Ida Gilden Glazer
Ira Gordon
Roslyn Gentler Gross
Gratian A. Gurney
Dorothy Imber
Kathleen S. Jacobson
Roy John
Harold Klotz
Harvey Lefer
Addie Levy
Joseph Levy
Celyne Lehman Levy
Elsie Maier
Jennah Montroll
Louise Ann Rosenbaum
Morewitz
Arnold Pell

Sol Platt
Louis Pozez
Diane Pratt
Leo Roth
Emmy Lou Roux
Arnold Rubin
Joseph Sadow
Harold Schiff
Walter Smit
Frances Suder
Rose Rubinson Sussfeld
Dorothy Marie Taub
Solomon Taylor
Janet Marks Teter
Victor Tewele
Max Weiner
Sadie Schiff Wile

A Morning with Brad Sham, Sunday March 3

I wish to purchase (qty) **Luxury Box tickets*** to A Morning with Brad Sham at \$108 each*

I wish to purchase (qty) **General Admission tickets** to A Morning with Brad Sham at \$54 each

Your Name:

Names of Guests:

.....



*Deadline to purchase tickets:
Feb. 23*

I cannot attend, but wish to show my support of our Beth-El Campers! My donation is enclosed.

To purchase by check, return the form with your payment to Beth-El Congregation, 4900 Briarhaven Rd., Fort Worth TX 76109

To purchase online visit bethelfw.org/amorningwithbradsham or scan the QR Code.

Beth-El MRJ & WRJ present ...



Cowboys QB Dak Prescott with Brad Sham

A Morning with Brad Sham The Voice of the Dallas Cowboys

Sunday, March 3

Beth-El Great Hall

Supporting Camp Scholarships

*Did you know:
three weeks
of camp costs
\$5,525.00?*

Luxury Box *limited to first 30 people: \$108 per person and includes:

9:30 a.m. private meet-and-greet with Brad, mimosas, and a signed football,

10:15 a.m. brunch

10:45 a.m. presentation

General Admission: \$54 per person and includes:

10:15 a.m. brunch

10:45 a.m. presentation



*Deadline to purchase tickets:
Feb. 23*

Beth-El MRJ and WRJ are covering the costs for this event, so all proceeds will go to camp scholarships.



Beth-El Congregation
4900 Briarhaven Road
Fort Worth, TX 76109

Our mission: To meet the spiritual, educational, social, and religious needs of its members through the teachings and practices of Reform Judaism and to connect members to their Jewish identity and community.

NON PROFIT ORG.
 U.S. POSTAGE
 PAID
 FORT WORTH, TX
 PERMIT 1617

ADDRESS SERVICE REQUESTED

Beth-El Congregation
 4900 Briarhaven Road
 Fort Worth, Texas 76109
 www.bethelfw.org
 817-332-7141 phone
 fax 817-332-7157

Rabbi, Brian Zimmerman: rabbiz@bethelfw.org
 Rabbi Emeritus, Ralph Mecklenburger: rabbi@bethelfw.org
 Executive Director, Amy Robbins: director@bethelfw.org
 Executive Assistant, Pattie Wood: bethelofc@bethelfw.org
 Education Director, Cantor Shoshana Abrams Kaikov: shoshanakaikov@bethelfw.org
 Music Director, John Sauvey: jesbaritone@gmail.com
 Building Manager, Jaime Rivera: cust@bethelfw.org
 Bulletin Editor, Rick Press: rickbpress@gmail.com

Beth-El Board of Directors:
 Robert Simon, President
 Russ Schultz, Past President
 Eve Shulman, 1st Vice President
 Shayna Coyne, 2nd Vice President
 Semé Cooper, Secretary
 Sheldon Levy, Treasurer
 Directors: Yolanda Becker, Erica Bekerman, Kim Factor,
 Angie Friedman, Red Goldstein, Matthew Henken,
 Rick Press, Karl Rosenblum, Ben Rosenthal,
 Marty Rubinson, Nancy Schwartz, Jon Siegel
 WRJ: Michelle Hartman, President
 MRJ: Eric Deutsch, President
 FWFTY: Connor Maxon, Erin Beck-Johnson, Presidents

Contributions

- Make your contribution online at: **bethelfw.org** or fill out the form below and mail it with your check to Beth-El Congregation
- **Undesignated donations** will be placed in the Temple Fund.

\$10-minimum contribution: Temple Fund, Religious School Fund, Youth Fund, Library Fund, Music Fund, Mitch Stenzler Scholarship Fund, Rabbi Zimmerman’s Discretionary Fund, Rabbi Mecklenburger’s Discretionary Fund, President’s Discretionary Fund, Religious School Director’s Discretionary Fund, Temple Archives, Caring Congregation

\$50-minimum contribution: Rosenthal-Siegel Education Endowment Fund, Operating Endowment Fund, Endowment #2

Other funds: **Tree \$20, Prayer Book \$30, Floral \$50, Tree of Life Leaf \$300**

Contribution Form

Enclosed please find the amount of \$ _____

Designated Fund: _____

In Honor of: _____

In Memory of: _____

Donor Name(s): _____

Please send me

Address: _____

_____ (qty)

Phone: _____

additional forms.

Send acknowledgment to: _____

