

Beth-Elements

The Bulletin of Beth-El Congregation - A Reform Synagogue Serving Tarrant County



October 2024



High Holy Days Worship Service Schedule

Membership cards or special tickets required for all High Holy Day services.
If you did not receive your membership card(s), please contact the Temple office ASAP.

Wednesday, Oct. 2

Rosh Hashanah Evening Service 7:30 p.m.
Followed by the WRJ congregational reception in
the Great Hall

Thursday, Oct. 3

Rosh Hashanah Family Service 9 a.m.
Rosh Hashanah Morning Service 10:30 a.m.

Sunday, Oct. 6

Kever Avot Memorial Services:
Emanuel Hebrew Rest Cemetery 10 a.m.
Beth-El Section of Greenwood Cemetery 11 a.m.

Friday, Oct. 11

Kol Nidre Service 8 p.m.

Saturday, Oct. 12

Yom Kippur Family Service 9 a.m.*
Yom Kippur Morning Service 10:30 a.m.
Discussion 12:45 p.m.*
"Israel, America, and Jewish Fort Worth:
Navigating the New Jewish World"
Yom Kippur Afternoon Service 2:15 p.m.
Jewish reflection and song in the Chapel with
Angie Friedman and Rabbi Zimmerman.... 3:30 p.m.*
Yizkor and Neilah Service 4:15 p.m.
Followed by break the fast in the Great Hall

*Yom Kippur services, discussion, and reflection in
the Chapel, will be in person only.

Worship Services

All services in person and streamed at
youtube.com/BethElCongregation.

Minyan

Tuesday-Thursday 6 p.m.

Welcome Shabbat with wine, cheese, and friends
at 5:30 p.m. Fridays, before the 6:15 p.m. services.

Friday, Oct. 4

Shabbat T'shuvah Kabbalat Shabbat with
Rabbi Zimmerman and John Sauvey..... 6:15 p.m.

Saturday, Oct. 5

Shabbat T'shuvah morning service of song
and study at Rabbi Zimmerman's home
with Angie Friedman..... 10:30 a.m.

Friday, Oct. 11

Kol Nidre service 8 p.m.

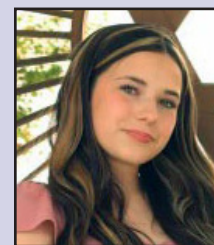
Additional worship services listed on page 2

B'nai Mitzvah



Elliot Bekerman
Oct. 19

Daughter of
Erica & David
Bekerman



Ava Danoski
Oct. 25

Daughter of Sara &
Ryan Danoski
Granddaughter of
Marge Van Geisen

Worship Services

Continued from page 1

Saturday, Oct. 11

Yom Kippur

See High Holy Days schedule on cover

Wednesday, Oct. 16 -Thursday, Oct. 24

Sukkot and Simchat Torah celebrations; see below

Friday, Oct. 18

"Pizza in the Hut"

Sukkot outdoor service and dinner.....6 p.m.

Please join your friends in the Sukkah for a short family-oriented service and dinner from Joe's pizza (and lasagna, too)! All ages, advance reservations required.

\$5 per person for ages 3 and older.

RSVP in advance for dinner with the link on the Beth-El website, or by calling the office by Oct. 16.

Saturday, Oct. 19

Shabbat morning service and

Bat Mitzvah of Elliot Bekerman..... 10:30 a.m.

Wednesday, Oct. 23

Simchat Torah in the Sukkah 6 p.m.

Thursday, Oct. 24

Simchat Torah and Yizkor Service with

Rabbi Zimmerman and Makom Shelanu

in the chapel..... 10:30 a.m.

Friday, Oct. 25

Kabbalat Shabbat and Bat Mitzvah

of Ava Danoski with Rabbi Zimmerman

and Angie Friedman 6:15 p.m.

Friday, Nov. 1

Kabbalat Shabbat Service

with Rabbi Mecklenburger..... 6:15 p.m.



Pizza in the Hut - Oct. 18, 6 p.m.

Sukkot dinner and all-ages family service

\$5/person. Call the office to make reservations.



Brian Zimmerman, Rabbi

stands upon three things: the Torah, the Temple service (prayer), and acts of loving kindness." Pirkei Avot 1:2.

Those powerful words from the Talmud, sung as we parade the Torah through the congregation before we read it, guide us as we enter another holy season.

As we prepare to gather for four days, hundreds of us with different lives, many living miles apart, I hope these words will challenge and inspire us in the new

Divrei Torah

Rabbi Brian Zimmerman

Shimon the Righteous, one of the last Rabbis of the Sanhedrin 1,800 years ago, said: "The world

year.

Torah: How can the words of our past challenge us to live fuller Jewish lives in the noisy and distracting present?

Avodah: Can we approach these daily moments of our lives as if they were a prayer?

Deeds of Kindness: In our world filled with anger and division, can we open our hearts to see the godlike in every member of our community.

We cannot control the events of the world, but we can affect the type of temple we wish to be. Beth-El is a house of God.

May this new year inspire us to work toward that vision of Beth-El and to become the type of people — the type of community — we want to be.



Celebrations in the Sukkah

Lunch in the Sukkah every day

The Sukkah will be open during office hours, 9 a.m.-4:30 p.m., for those who wish to bring a sack lunch and enjoy Sukkot, the harvest festival.

Wednesday, Oct. 16, 5-7 p.m.

Please join Rabbi Zimmerman, Mimi (and maybe their pup, Winter) for a drop-in hello with wine, cheese, and dessert to welcome the holiday and shake the Lulav. This is an all-ages gathering sponsored by Rabbi Brian and Mimi to thank Beth-El members for all they do.

Thursday, Oct. 17, 6 p.m.

MRJ dinner in the Sukkah

Friday, Oct. 18, 6 p.m.

Sukkot dinner and all-ages family service in the Sukkah (Reservations required)

Sunday, Oct. 20, noon

Religious School and all youth group lunch and party in the Sukkah

Tuesday, Oct. 22

5:30 p.m. WRJ happy hour in the Sukkah

7:30 p.m. Curious About Conversion Class in the Sukkah

Wednesday, Oct. 23, 6 p.m.

Simchat Torah celebration in the Sukkah Unroll the entire Torah with us — if we have enough people — and join in a celebration of the ending and immediate beginning of our Torah cycle

Thursday, Oct. 24, 10:30 a.m.

10:30 a.m. Simchat Torah and Yizkor service with Makom Shelanu at Beth-El



Robert Simon

President's Message

..... Temple President Robert Simon

Greetings. As I write this column, we have just finished our first day of Religious School, and it was

a huge success. The Great Hall was filled with kids and their parents, the music was rousing (Thanks, Scott Slotter!), and the Men of Reform Judaism provided a delicious breakfast of bagels, cream cheese, apples and honey. Both the turnout and the enthusiasm were exciting.

The Religious School welcomed many new families, some new to the Beth-El community and others new to Religious School. We look forward to a great year. I thank our Religious School Director, Shoshana Kaikov, her assistant, Galit Lerman, the teachers, and the *madrichim* (teaching assistants). If you have Religious School-age children, please enroll them if you have not already. They are our future, and there is no substitute for Jewish education.

Rosh Hashanah is upon us. I wish you Shana Tovah. We look forward to seeing you on the evening of Oct. 2 (1 Tishri 5785) and next morning. Beth-El Congregation is working diligently to prepare for the High Holy Days. Our Religious School Director, Cantor Shoshana Kaikov, will serve as our cantor for High Holy

Days. The WRJ will provide an Oneg Yom Tov reception after the Erev Rosh Hashanah service. Please save room for challah, apples, honey, fruit, and desserts.

I will address the Congregation from the Bima on Rosh Hashanah morning as I did the last year. The topic will be the sequel to last year's address about the importance of Judaism to the world and the importance of Reform Judaism within the Jewish world. Please come and listen. Yom Kippur follows Rosh Hashanah, and Sukkot follows Yom Kippur.

The MRJ built the Sukkah in the courtyard on Sept. 29. During Sukkot, the minyan will meet in the Sukkah, weather permitting. Come join your fellow congregants that week for joy, prayer, and fellowship in the Sukkah.

On a more somber note, the anniversary of the Oct. 7, 2023, massacre in Israel is also approaching. The Jewish Federation of Fort Worth and Tarrant County will hold a community commemoration and memorial on Monday, Oct. 7, 2024, across the street at Congregation Ahavath Sholom.

Please come show support for your local Jewish community, the people of Israel, and Jews around the world. We must strengthen and support each other during this difficult time. L'Shalom.

Schmoozing with the Simons

Sundays, Oct. 13, 20, and 27, 9:15 a.m. in the Gathering Area.

Beth-El President Robert Simon and his wife, Cindy, will welcome parents of Religious School students — and any other congregants — with coffee, bagels, and conversation.



Cindy and Robert Simon

Save the date: Chanukah fun

Jr. Maccaabees (ages 0-Kinder) Dec. 7, 4 p.m.

Chanukah cookie decorating and playtime with friends at Brittany Walker's home. Cookies, icing, and sprinkles will be provided.



Healing prayers and visits

If you know someone at home or in the hospital who could use a visit from the Rabbi or another Temple member, or if you have the name of an ill family member or friend that you would like to be read at our Shabbat services, call the Temple office or go directly to our website Community, Mi Shebeirach/Prayer and Visit Request (<https://bethelfw.shulcloud.com/form/beth-el-mi-shebeirach-or-visit-request>).

Rabbi Zimmerman, Renee Woods, and Pattie Wood will get the information from this site quickly.

We can't visit or offer assistance if we don't know! Thanks in advance for your help.



Community Solidarity

**An evening at
Congregation Ahavath Sholom
Monday, Oct. 7, 7 p.m.**

The Tarrant County Jewish Community joins together to remember and stand in solidarity with our Jewish homeland. One year later, we will come together to honor the lives lost and pray for a peaceful future.



Shoshana Abrams Kaikov

Religious School

Education Director, Cantor Shoshana Abrams Kaikov

It's hard to believe October is here and the High Holy Days are upon us! Last month, we started

another year of Religious School, and we welcomed new and returning families with a fabulous opening-day assembly and bagel breakfast. There are no words to adequately describe the incredible energy here at the Temple on Sunday mornings. Toddlers to teens, our students are having so much fun learning and growing with their Beth-El family.

I want to encourage all our amazing Beth-El families to get involved, not just on Sundays! If you are not receiving my weekly family email updates or you have not joined our Religious School parent Facebook group, please be sure to let me

know so I can add you. I regularly share information regarding family programming, adult education, youth group events, volunteer opportunities, Tot Shabbat, and more!

We now have thriving youth groups for all students: Jr. Maccabees, 0-kindergarten; Maccabees, 1st-4th grades; BEJY, 5th-7th grades; FWFTY, 8th-12th grades. Our youth group chairs are working with Rabbi and me to plan fun social gatherings for students outside of Religious School.

A big thank you to Cindy and Robert Simon who continue to host Shabbat dinners for each grade level, a beautiful effort to help our community grow even stronger. This month, we will be offering a family service on Rosh Hashanah and Yom Kippur as well as a beautiful Sukkah

family shabbat dinner! Be sure to sign up for our family retreat at Greene Family Camp, Nov. 1-3. It promises to be an incredible weekend!

As we head into the High Holy Days and the sound of the Shofar awakens us, I invite us all to turn inward, reflect on the year that has passed, and look to the new year ahead. What were some of the highlights? What could have been better? What are our hopes and dreams for the coming year? How can we make 5785 the best year yet?

It is my hope and prayer that this new year be filled with health, joy, Jewish learning, family, friendships, community, new adventures, partnership, patience, and love!!

L'Shanah Tovah U'metukah!

Religious School and Youth Group Activities



Above, scenes from the first day of Religious School on Sept. 8.

At right, FWFTY members enjoy their first fall gathering at Cidercade. Pictured from left: FWFTY Co-President Connor Maxon, Rabbi Brian, Madison Smith, Chloe Koon, Ben Carlisle, Cayden Koon, Co-President Erin Beck-Johnson, Issac Isgur, and Gabe Caplan.



For information about more fall events, including a youth group party in the Sukkah, sleepover at Temple, and DFW youth group day at Six Flags, contact Rabbi Brian at rabbiz@bethelfw.org



Laurie James

Women of Reform Judaism: WRJ Annual Brunch

WRJ President Laurie James

Last month, WRJ presented a \$12,000 check to our Religious School that represents our members' generosity from our Annual (formerly Donor) Brunch, which is coming up again on Nov. 10. We'd love donations of bottles of wine for a wine pull and "experience items" — tickets to sporting events or theater — for our silent auction. Please email if you have questions.

Proceeds from the Gift Shop also support these efforts, so stop in and see the new merchandise that Michelle Hartman and her volunteers have for the holidays. Sisterhood members give generously of their time in creating the magnificent Rosh Hashanah reception, and a special thanks to our Culinary VPs Marge Van Giesen and Kim Factor for making this happen, and to all the volunteers who bake, plate, and help set up. Finally, my favorite event is our **happy hour in the Sukkah on Oct. 22** — please join us!

A letter from Trudie and Marilyn:

Dear Women of Beth-El Congregation,
WRJ is hosting its **Annual Brunch and Silent Auction on Sunday, Nov. 10**. We hope you have received your

invitation by now. Here are some answers to a few frequently asked questions about our biggest annual fundraiser:

Why should I go? Money raised from this event helps fund Religious School and camperships. We understand that parents of Religious School students pay a generous amount for their children's religious education, but our school is top notch and it takes additional time and money to achieve those high standards. By buying a ticket to this event and participating in the silent auction, your dollars will help reduce the overall costs for the school year.

Will there be a speaker at the event? Our speakers will focus on students at DeZavala Elementary School, most of whom live in a "food desert."

Why do we care about DeZavala? Located at Broadway and Galveston, not far from the old Temple, we have had an ongoing relationship with this school where the principal estimates 280



WRJ President Laurie James (left) with board members Tatiana Miller (center) and Shayna Coyne (right) presented our contribution to Beth-El's Religious School.

children go home each Friday afternoon needing food to help them make it until Monday. That is why we came up with the social action project of supplying "Snack Sacks" for the weekends.

Why support a social action project when the money is supposed to go to our Religious School? The money for "Snack Sacks" is donated 100% by some generous members. The money we raise at the Annual Brunch and Silent Auction will go to the Religious School and camperships!

Thank you for reading this lengthy letter!
— Trudie Oshman and Marilyn Stenzler,
Chairs, WRJ Annual Brunch



Eric Deutsch

Men of Reform Judaism

MRJ President Eric Deutsch

Best wishes for a sweet new year from your MRJ!

September was a very active month

for the MRJ. On Sunday, Sept. 8, we assisted the Religious School with the opening-day celebration, and then on Saturday, Sept. 14, we catered a Kiddush luncheon for a bar mitzvah.

On Sunday Sept. 29, we constructed the Sukkah, and, speaking of the Sukkah, we will be having our annual MRJ Night

in the Sukkah on Thursday, Oct. 17. Look for details in the Rabbi's weekly e-blasts.

Our annual Matzo Ball Golf Classic, MRJ's biggest fundraiser, will be on Sunday, Oct. 20. WE NEED GOLFERS AND SPONSORS! So, if you are interested in playing or sponsoring, or just volunteering to help out, please let me know. See form on page 11.

Please contact me if you have any questions about the MRJ at eric.deutsch@haynesboone.com or 972-800-3578.

Mazel Tov!

To **Evan Hoffman & Nimisha Pachory** on their marriage in September. Evan is the son of the late Linda Hoffman, who would have been thrilled!

For the latest updates,
get weekly e-blasts from Rabbi
by e-mailing:
rabbiz@bethelfw.org

Contributions

Archive Fund

- In Honor of
 Billy and Rozanne Rosenthal
 · Judith Cohen
 In Memory of Pacey Laves
 · Fran and Eric Kreindler

Library Fund

- In Memory of Lora Goldin
 · Margie Zentner

Prayerbook Fund

- In Honor of Ben Rosenthal's Recovery
 · Stanley and Barbi Eisenman

Rabbi Zimmerman's Discretionary Fund

- In Honor of High Holy Days 2024
 · Denae Chance and Marty Rubinson
 In Honor of Rabbi Zimmerman
 · Jody and Mel Platt
 In Memory of
 Martha Lanier Reid Henderson
 · Tere Goldstein & John Lanier

Temple Fund

- In Honor of Beth-El
 · Once Upon a Time
 In Honor of Beth-El
 · Nathan Smith
 In Memory of Jacob Ross
 · Beverly and Michael Ross
 In Memory of Sallye Rosenblum
 · Finucane Family
 In Memory of Debby Rice
 · Rozanne and Billy Rosenthal
 In Memory of Sarae Maxie Cohen
 · Rozanne and Billy Rosenthal

Temple Fund (continued)

- In Memory of Elliot Blumberg
 · Loesje Blumberg
 In Memory of Ted Krakover
 · Carol and Jerry Courter
 In Memory of Jack Sherman
 · Selma Sherman
 In Memory of Claire Blackman
 · Dana and Jacob Rosenstein
 In Memory of George LaMere
 · Susan and Guy LaMere
 In Memory of Victor Leventhal
 · Harry Leventhal and
 Judi Massis-Leventhal
 In Memory of Clara Zack
 · Susan and Bob Lewis
 In Memory of Janet McCullough John
 · Beverly and Michael Ross
 In Memory of Sylvia Becker
 · Yolanda and Bryan Becker
 In Memory of Joseph Harold Singer
 · Judith Cohen
 In Memory of Esther Berman Singer
 · Judith Cohen

Donation for De Zavala Elementary School

- Cynthia Gilbert

Wish List: Irrigation Well

- Steve Katten
 · Carole Rogers
 · Barry Schneider
 In Memory of Chester Gestring
 · Martha Brown

Beth-El Kitchen wish list:

- set of stove handles\$1,200
- commercial griddle \$1,800
- heat lamps \$1,000
- plate warmers (two)..... \$3,000 each
- Dishwasher unit\$46,000

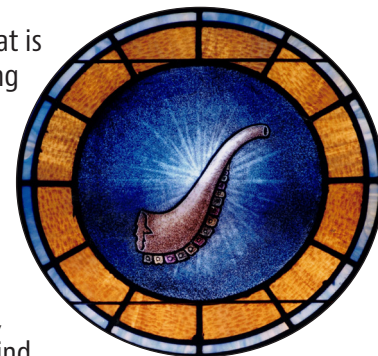
Finding Our Place in the Jewish Puzzle of Life:

A Search for Personal Theology with Rabbi Zimmerman

Tuesdays at noon, Oct. 8 and 15

Have you ever been asked why you are Jewish and found yourself groping for an answer? Has your son or daughter asked you why he or she has to have a bar or bat mitzvah and you knew it mattered but found yourself speechless? This twice monthly class led by Rabbi Zimmerman will study philosophers, occasionally bring in guest speakers, explore Jewish history and text, all with the goal of articulating a personal theology. If this appeals to you, please consider joining us.

A shofar is a ram's horn that is blown like a trumpet during Rosh Hashanah services, every day except Shabbat during the preceding month of Elul, and at the end of Yom Kippur. The four sounds of the shofar — *tekiah*, *shevarim*, *teruah*, and *tekiah gedolah* — remind many people of a crying voice. Hearing the shofar's call is a reminder for us to look inward and repent for the sins of the past year.



— MyJewishLearning.com

College Student Outreach: Last Call

It's that time again to connect with Beth-El college students. PLEASE send Rabbi Zimmerman your college student's address, EVEN if you did it last year. (Most dorm addresses change every year!)

We'll send them packages during the year, or maybe even make a visit to their campus.

Send your student's information ASAP to:
rabbiz@bethelfw.org

- | | | |
|------------------|-----------|------------|
| · Student's name | · Address | · Phone |
| | · E-mail | · Birthday |

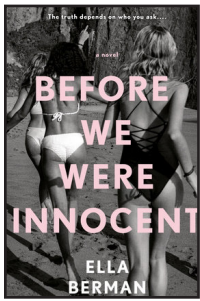
October - 2024 - 5784-85

Sunday	Monday	Tuesday	Wednesday	Thursday	Friday	Saturday
	30 7:30pm Religious School Committee Zoom	1 6 pm Evening Minyan	2 EREV ROSH HASHANAH 2 pm TEMPLE OFFICE CLOSES 7:30 pm Erev Rosh Hashanah Service	3 ROSH HASHANAH TEMPLE OFFICE CLOSED 9 am Rosh Hashanah Family Service 10:30 am Rosh Hasha- nah Morning Service	4 5:30 pm Shabbat welcome 6:15 pm Kabbalat Shabbat	5 10:30 am Shabbat Song, Study and Lunch at Zimmerman home
6 9:15 am-12:30 pm Gift shop open 9:30 am Religious School 10 am Kever Avot at Hebrew Rest 11 am Kever Avot at Greenwood	7	8 12 pm Jewish Puzzle of Life 6 pm Evening Minyan	9 9:30 am Archives meeting 11 am-2 pm Gift shop open 6 pm Evening Minyan	10 12 pm PrimeTimers 6 pm Evening Minyan	11 EREV YOM KIPPUR KOL NIDRE 12 pm Temple Office closes 8 pm Erev Yom Kippur Kol Nidre Service	12 YOM KIPPUR 9 am Family Service 10:30 am Morning Service 12:45 pm Music and Reading 2:15 pm Afternoon Service 3:30 pm Reflection and Song in Chapel 4:15 pm Concluding Service
13 9:15 am-12:30 pm Gift shop open 9:30 am Religious School	14 TEMPLE OFFICE CLOSED 7 pm Board Meeting	15 12 pm Jewish Puzzle of Life 6 pm Evening Minyan	16 EREV SUKKOT 9:30 am Archives meeting 11 am-2 pm Gift shop open 5 pm Rabbi & Mimi wine, desert and cheese in the Sukkah 6 pm Evening Minyan	17 SUKKOT TEMPLE OFFICE CLOSED 5:30 pm MRJ Meal in the Sukkah	18 SUKKOT 6 pm Family Service & Pizza dinner (all ages), \$5, reservations, in the Sukkah	19 SUKKOT 9 am Zoom Torah Study 10:30 am Shabbat Morning Service and Bat Mitzvah of Elliot Bekerman
SUKKOT 20 9:15 am-12:30 pm Gift shop open 9:30 am Rel. School 9:30 am Book Discussion 12:15 pm Religious School and Youth Group Sukkot Party 1 pm MRJ Matzo Ball Classic Golf Tourny	21 SUKKOT	22 SUKKOT 5 pm WRJ Happy Hour in the Sukkah 6 pm Evening Minyan 7:30 pm Curious About Conversion class	23 9:30 am Archives meeting 11 am-2 pm Gift shop open 6 pm Simchat Torah in the Sukkah 6 pm Evening Minyan	24 TEMPLE OFFICE CLOSED 10:30 am Simchat Torah and Yizkor	25 5:30 pm Shabbat welcome 6:15 pm Kabbalat Shabbat and Bat Mitzvah of Ava Danoski	26 9 am Zoom Torah Study
27 9:15 am-12:30 pm Gift shop open 9:30 am Religious School 12:15pm Fifth Grade B'nai Mitzvah Workshop	28	29 6 pm Evening Minyan	30 9:30 am Archives meeting 11 am-2 pm Gift shop open 6 pm Evening Minyan	31 6 pm Evening Minyan	November 1 Beth El All Ages Retreat at Greene Family Camp 5:30 pm Shabbat welcome 6:15 pm Kabbalat Shabbat Greene Family Camp	2 9 am Zoom Torah Study Family Retreat Nov. 1-3

For additional information and updates about events, please visit our website at www.bethelfw.org or see Rabbi's e-blasts.

Library Reviews

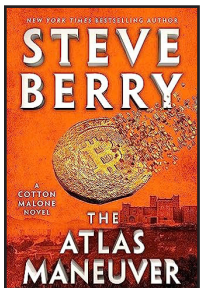
.....Margie Zentner



Before We Were Innocent by Ella Berman

recounts the story of three friends who set out on the ultimate vacation in Greece before college begins. Only two return

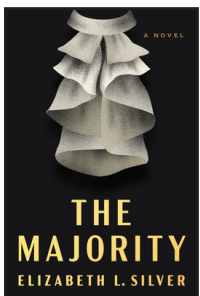
home after they discover their friend Evangeline has been murdered. What ensues is a gripping story about loss, the poisonous side of the media, and female friendship.



The Atlas Maneuver by Steve Berry

is the latest Cotton Malone adventure in which Cotton unravels a mystery from World War II. The story revolves

around the discovery of billions in gold and other stolen valuables. Known as Yamashita's Gold, these treasures were hidden by Japan in underground caches all over the Philippines.



The Majority by Elizabeth L. Silver

tells the story of Justice Sylvia Olin Bernstein, whose life unfolds during some of the most consequential events in history. Spanning 50

years, Sylvia's story reveals the intimate truth of how she ascended to the Supreme Court while shouldering her own burdens of love, motherhood, and career. Readers, of course, will think of Ruth Bader Ginsberg but will also be reminded of what women faced trying to maintain careers and families in the 1970s.

Primetimers

.....Michelle Hartman

Oct. 10, noon

Chag Sameach, Primetimers! I hope to see many of you at our High Holy Days services. For our Oct. 10 program, we will be joined by Tamara Castaldo, of Jewish Family Services. She will be discussing elder financial abuse scams and how to avoid them. Come learn how to protect yourself and your loved ones from these financial predators. Lunch starts at 12:30 p.m.

Lunch will be catered by McAlister's, or feel free to bring your own.



Learn how to protect yourself and your loved ones from financial abuse scams at October Primetimers

For \$10, you get chips, a cookie, and your choice of sandwich: Harvest chicken salad, roast beef, or veggie.

Be sure to save room for dessert! Please RSVP to Michelle at hartman8729@sbcglobal.net or 817-706-3451 by Sunday, Oct. 6.



This year at Beth-El we are collecting shelf-stable items for the Food Closet at DeZavala Elementary School. The Food Closet provides food to students and their families for the Thanksgiving break. Bring your donations to Beth-El by Oct. 28.

<i>Canned Items</i>	<i>Meal Helpers</i>
Tuna	Rice (1 pound bags)
Chili	Dried Pasta
Vegetables	Mac & Cheese
Pastas	Instant Potatoes
Beans	Tuna/Chicken Helper
Hearty Soups	Cornbread Mix
Fruit	Cooking oils
<i>Breakfast Items</i>	<i>Lunch/Snack Items</i>
Cereal (regular size boxes)	Peanut/Nut Butter (regular size jars)
Oatmeal (18 oz canister)	Jam/Jellies (plastic jars, if possible)
Muffin Mix (Just add water type)	Cracker boxes (regular size boxes)

Then and Now: *More than a Century of Beth-El's Presidents*

Hollace Ava Weiner, Temple Archivist



Hollace Weiner

At the turn of the century, when Beth-El moved into this spacious building, there was agreement that we should display photos of every past president since our inception

in 1902. But disagreement arose over how to showcase them. Gallery owner Evelyn Siegel, the Temple's arbiter of art, did not want the presidents lined up in identical frames like a bunch of "country club presidents."

Maddie Lesnick, who became president in 2003, was determined to get the presidents' faces on the wall by the end of her two-year term. She promised me she would handle the politics and raise the money if I would gather the pictures and produce a design.

Corrine Jacobson, a congregant for 85 years, tracked down photos of past presidents who had moved out of state or passed away. Interior decorator Harriette Gachman suggested clustering presidents together in chronological groupings then positioning them around pictures that illustrate the way Beth-El looked when they served. Art dealer Phyllis Fenton recruited designer Doug Highfield, the owner of Art Enhancement, Inc., in Irving, who refined these ideas and eventually created three-dimensional collages with pictures of presidents and milestones such as the Temple fire of 1946.

The President's Collage, while permanent, had to be easy to take down so other exhibits could periodically fill



Above, The President's Collage is currently on display in the Hall of Remembrance. Below, a detail of Russ Schultz, Robert Simon and Michael Appleman

the Hall. In 2023, for example, the past presidents went into storage and a mural of Jerusalem's Western Wall went up to commemorate Israel's 75th anniversary.

This summer, when the Archives Committee dismantled the Israeli exhibit, it became clear to me and Cara Luftman Jones that the presidential display's bronze title, "A Century of Leadership," was out of date. The heading needed to state, MORE THAN A Century of Leadership. But the bid to cast those two new words in metal was \$864. Gasp! A graphics designer at FastSigns suggested using the less costly PVC to fashion the words.

What about pictures to illustrate the congregation's age? At Beth-El's 120th anniversary gala in 2022, no one was assigned to take photos but Sherry Oden had, thankfully, taken pictures with her phone. She found two of colorful balloons that perfectly illustrate the Temple's remarkable age and resilience.

Walk into the Hall of Remembrance. Gaze at the presidential collage. Don't take it for granted

— not our congregation's age nor the thoughtful back-and-forth that went into creating this lively, imaginative, collaborative display.



The Gift Shop is Open!

The WRJ Gift Shop at Beth-El is the easiest way to support Beth-El's Religious School.

Gift Shop Hours: Sundays, 9:15 a.m. to 12:30 p.m. & Wednesdays, 11 a.m. to 2 p.m.

Yahrzeits

October 4

Abe Anisman
Graham Baker
Arthur Beck
Ted Brown
Isadore Carb
Chandler Greines Cohen
Irving J. Cohen
Louise Freeman
Jean Frolkis
Helen Stern Gernsbacher
Chester Gestring
Elise Schoenberg Greenman
Victor Leventhal
Alfred Levine
Sam Nurenborg
Mark Pell
Fannie Potishman
Sondra Pritchard
Sam Reznikoff
Betty Rice
Gary Rosenthal
Doris Lackritz Roth
George Sepp
Phyllis Siegel
Richard Slatkin
Rose Ungar
Seymour Weisser
Hortense Weltman
Joe Zeve

October 11

Anne Berenzweig
Tessa N. Bermont
Rabbi Abraham J. Brachman
Grace Bressert
Gail Chance
Anna Mae Drescher
Charles Etkoff
David Field
Louise Freeman
Leo Freeman
Daniel Gachman
Aaron Gernsbacher
Hyman Ginsberg
Solomon Griver
A. Haller
Alexander Handleman
Richard Hochberger
Sol Hochster
Leonard Hochster
Shirley James
Sam A. Joseph
Bessie Korman
Henrietta Krumholz
Kathlyn Parker Landman
Harry Lederman
Donald Louis
Estelle Masters
Selma Weiner Mayer
Hennie Milner
Mollie Platt
Antoinette Pollack
Ben Rauch
Paul Schneiweiss
Viola Fleetwood Seltzer
Bertha Blumenthal Shaw
Harold Sloane
David Stenzler
Cipa Rosenberg Taylor
Henry J. Weltman

October 18

Pierre Azerad
Rolfe Becker
Rose Wagner Bock
Rose Bock
Abram Bodzy
Milton Butterman
Leo Butterman
Bessie Brown Carb
Liliana Kaplan Dujan
Rabbi G. George Fox
Hortense Fox
Ruth M. Friedman
Harold Frolkis
Freida Greiver
Albert D. Gugenheim
Robert C. Gurney
Natalin Heiden
Maurice Hofstein
Rose Honigfeld
Faye Kaitcer
Marion Kaplan
Marguerite Weltman Katz
Gertrude Kottler
Tom Krakover
Gus S. Landman
Gloria Lederman
Leo Lenhoff
Ben Levy
Mabel Saperston Levy
Rosanne Margolis
Jerome W. Mecklenburger
Bernice Meyerson
Yetta Moidel
Ethel Collins Oshman
Frank Pell
Rona Rosenfield
Irving Sachs
Paul Schaefer
Dr. Edwin G. Schwarz
Jim Zack

October 25

Ben Alpern
Elizabeth Beck
Margaret Sheila Benjamin
Frank Rupert Benjamin
Gustav Braun
Becky Carter
Janey Macks Carter
David Adan Dorontes
Tobia Ellman
Solomon C. Freed
Louise Gaston
Byron S. Gernsbacher
Fannie L. Ginsberg
Herman L. Goldstucker
Max Granek
Meta Hochster
Esther Frindell Hoffman
Anita Kboudi
Betty Kessler
Selma Krauss
W. P. Kruckman
Hugh Lamensdorf
Dorene Bassist Landman
Sam Levy
Morris Lulky
Lilli Bogen Morris
Shirley Rubinson
Sarah Schwartz
Derrell Slater
Mike Stein

November 1

Barnett Bernstein
Michael Boxer
Hattie Kahn Carb
Holly Clegg
Fay B. Cohen
Rose Davis
Ernest Friedman
Bertha Fuerst
Irwin Fuerst
Abe B. Gardner
Robert Gerson
Nathan Imber
Elliot Jacobson
Henry W. Landman
Samuel Lefkovitz
Annie Mann Lehwald
Stephen Herman Mehl
Jack Orlow
Harry E. Ritchey
Norman Rosenblum
Frances Schechter
Flora Weltman Schiff
Belle Schultz
Ann Schuster
Edwin Schwarz, Jr.
Audrey Sloter
Bill Steinman
Jean Strassman
Beatrice Weinshenker
Muriel (Mimi) Weisser
Ben H. Wile
Joseph Zentner

MRJ's Annual Matzo Ball Classic Golf Tournament

Sunday, Oct. 20, at 1 p.m.
Hawk's Creek Golf Club
6520 White Settlement Road
Westworth Village, TX 76114

\$130 Entry Fee

Each player receives a round of golf with cart and gift bag. Prizes for the longest drive and closest to the pin.

Name: _____

Team Members: _____

Email: _____

Phone: _____

Matzo Ball Classic Sponsorships:

\$1,000 Gold Sponsor

Recognition as dinner sponsor and includes 4 golf entry fees

\$750 Silver Sponsor

Special recognition and includes 4 golf entry fees

\$175 Hole Sponsorship

Enclosed is my check made payable to **Beth-El MRJ** for the amount of (Fees + Sponsorship): \$_____

Detach and return this form with payment by Oct. 7 to:

Beth-El MRJ
4900 Briarhaven Road
Fort Worth, TX 76109



The Matzo Ball Classic is a Beth-El MRJ Activity and Fundraiser



Members and non-members welcome!

WRJ Annual Brunch

Sunday, Nov. 10

9:30 a.m. (check-in) to noon

Beth-El Great Hall

- Social action program •
- Silent auction •

RSVP by Oct. 29 • bethelfw.org



Beth-El Congregation
4900 Briarhaven Road
Fort Worth, TX 76109

Our mission: To meet the spiritual, educational, social, and religious needs of its members through the teachings and practices of Reform Judaism and to connect members to their Jewish identity and community.

NON PROFIT ORG.
 U.S. POSTAGE
 PAID
 FORT WORTH, TX
 PERMIT 1617

ADDRESS SERVICE REQUESTED

Beth-El Congregation
 4900 Briarhaven Road
 Fort Worth, Texas 76109
 www.bethelfw.org
 817-332-7141 phone
 fax 817-332-7157

Rabbi, Brian Zimmerman: rabbiz@bethelfw.org

Rabbi Emeritus, Ralph Mecklenburger:
 rabbi@bethelfw.org

Executive Director, Renée Woods:
 director@bethelfw.org

Executive Assistant, Pattie Wood
 bethelofc@bethelfw.org

Education Director, Cantor Shoshana Abrams Kaikov:
 shoshanakaikov@bethelfw.org

Music Director, John Sauvey: jesbaritone@gmail.com

Building Manager, Jaime Rivera: cust@bethelfw.org

Bulletin Editor, Rick Press: rickbpress@gmail.com

Beth-El Board of Directors:

Robert Simon, President

Michael Appleman, President-Elect

Eve Shulman, 1st Vice President

Shayna Coyne, 2nd Vice President

Semé Cooper, Secretary

Sheldon Levy, Treasurer

Directors: Yolanda Becker, Erica Bekerman, Kim Factor,

Kimberly Florsheim, Angie Friedman, Red Goldstein,

Matthew Henken, Eric Lawrence, Karl Rosenblum,

Ben Rosenthal, Nancy Schwartz, Marc Slotter

WRJ: Laurie James, President

MRJ: Eric Deutsch, President

FWFTY: Connor Maxon, Erin Beck-Johnson, Co-Presidents

Contributions

· Make your contribution online at: **bethelfw.org** or fill out the form below and mail it with your check to Beth-El Congregation

· **Undesignated donations** will be placed in the Temple Fund.

\$18-minimum contribution: Temple Fund, Religious School Fund, Youth Fund, Library Fund, Music Fund, Mitch Stenzler Scholarship Fund, Rabbi Zimmerman’s Discretionary Fund, Rabbi Mecklenburger’s Discretionary Fund, President’s Discretionary Fund, Religious School Director’s Discretionary Fund, Temple Archives, Caring Congregation

\$50-minimum contribution: Rosenthal-Siegel Education Endowment Fund, Operating Endowment Fund, Endowment #2

Other funds: **Tree \$20, Prayer Book \$30, Floral \$50, Tree of Life Leaf \$300**

Contribution Form

Enclosed please find the amount of \$ _____

Designated Fund: _____

In Honor of: _____

In Memory of: _____

Donor Name(s): _____

Please send me

Address: _____

_____ (qty)

additional forms.

Phone: _____

Send acknowledgment to: _____

